




1 Wilkinson Avenue Birmingham Gardens NSW

6  2  2 

This corner positioned property next to Newcastle University has consistently performed as a student accommodation property. With a return of \$940 per week this is an opportunity well worth consideration.

The home is an aluminium clad for low maintenance with tile roof and set on piers giving easy access for maintenance.

There are six bedrooms in the home with built in wardrobes, ceiling fans and furniture suitable for students in each. Living area is at the front with ceiling fan and a pleasant northerly aspect.

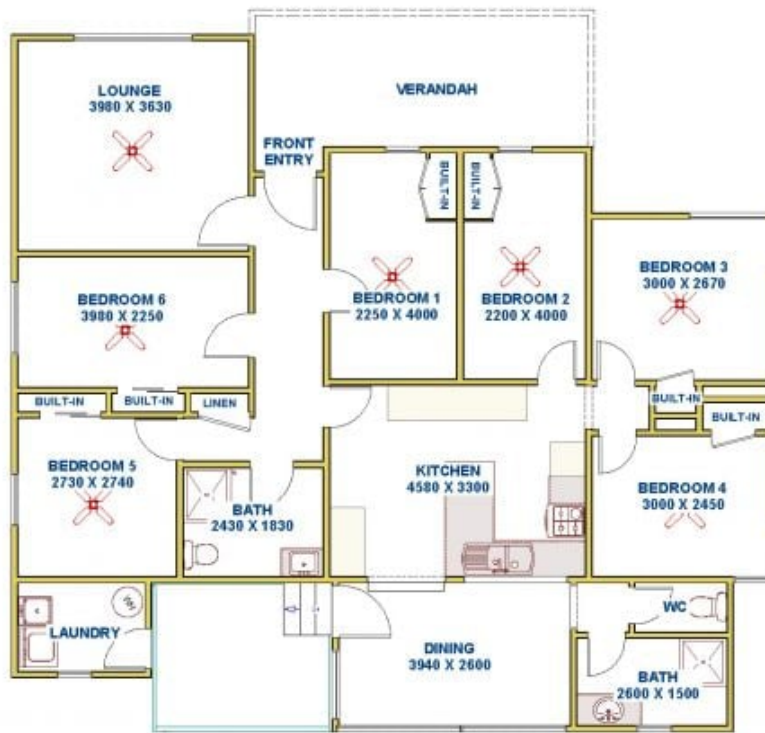
Kitchen design is practical and durable with stainless steel

[For full version visit the website](https://www.reecerealty.com.au/sale/nsw/newcastle-region/birmingham-gardens/residential/house/8202688)

Type : House
Land Size : 474 sqm
View : <https://www.reecerealty.com.au/sale/nsw/newcastle-region/birmingham-gardens/residential/house/8202688>



Allen Reece
02 4950 2025



WILKINSON AVE



Sitemap

ReeceRealty
Newcastle
and Maitland

**1 Wilkinson Avenue,
BIRMINGHAM GARDENS**

FLOOR DIAGRAMNOT TO SCALE****

This drawing has been prepared for marketing purposes. Dimensions are a guide only.