



14 Shereline Avenue Jesmond NSW

8 🛏 3 🚿

Rooms available now in this newly renovated 8 bedroom student house.

Located in walking distance to Newcastle University and Jesmond Shopping Center, close to public transport and John Hunter and Mater hospital

All rooms are fully furnished including beds, desk, chairs and wardrobes. Air conditioned options also available.

Sorry no pets

Note - the room's rent includes electricity and water usage

Internet is provided at the property as a complimentary utility. It should be noted that its reliability, speed or

Type : House

Price : \$260 per week pw

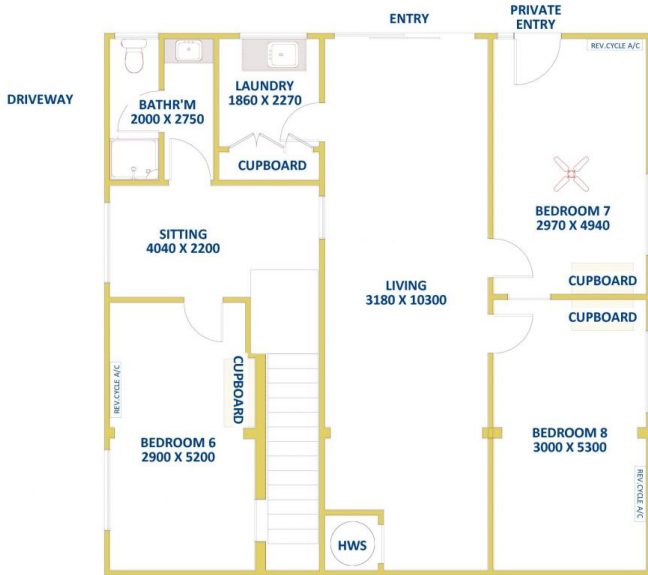
View : <https://www.reecerealty.com.au/lease/nsw/newcastle-region/jesmond/residential/house/8177590>



Melissa Reece
02 4950 2025

[For full version visit the website](https://www.reecerealty.com.au)

PAVED / UNDERCOVER
OUTDOOR ENTERTAINING
9000 X 8230

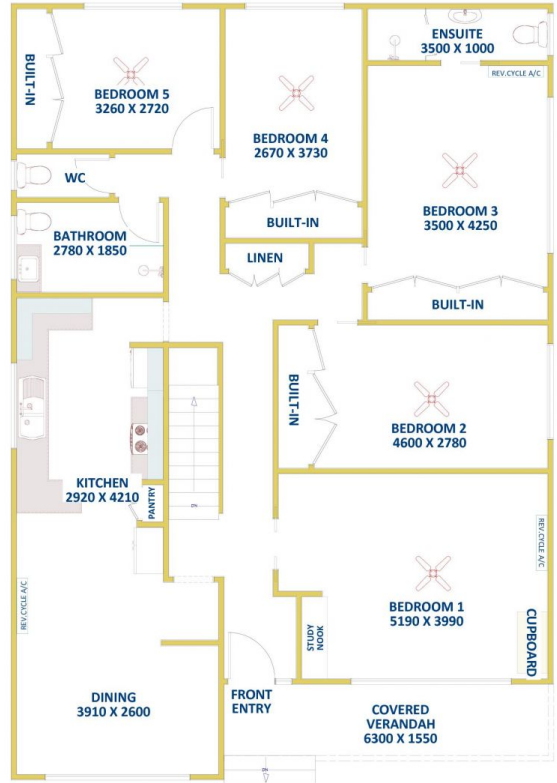


Downstairs
Internal Area
approx. 113m²



FLOOR DIAGRAM
****NOT TO SCALE****
This drawing has been prepared for marketing purposes. Dimensions are a guide only.

14 Shereline Avenue, JESMOND



Ground Level
Internal Area
approx. 148m²