

323a Newcastle Road Lambton NSW

5 🛏 2 🚗

This fantastic 5-bedroom house has a room available for lease.

Featuring shared common living area, modern kitchen and 2 fresh look bathrooms.

The private upstairs bedroom contains a large mirrored built in robe, ceiling fan and carpet flooring.

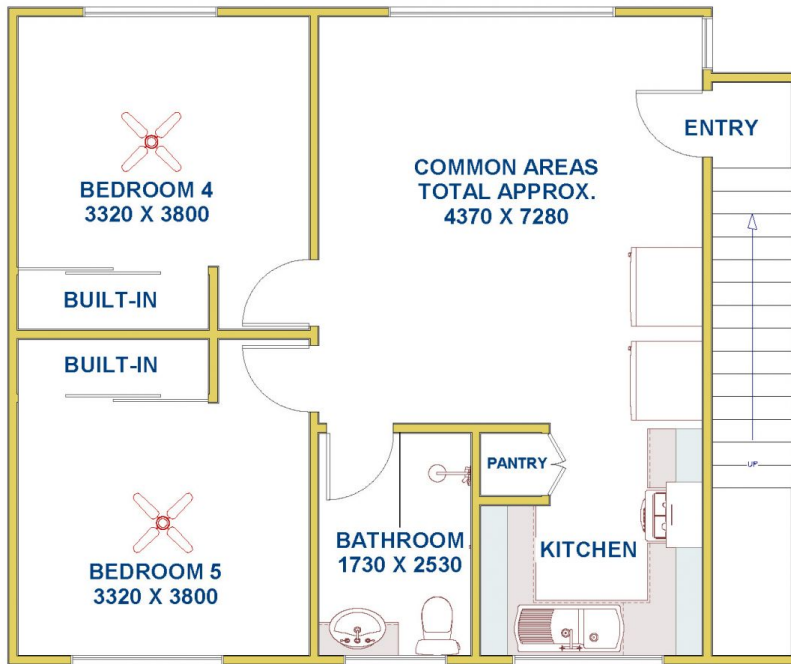
Located right between the Mater and John Hunter Hospitals, short distance to Newcastle University and Jesmond Shopping Centre. Public transport and the beautiful walking tracks through the stunning gardens at Jesmond Park, are a short walk down the road.

Type : Unit
Price : \$205.00 pw
View : <https://www.reecerealty.com.au/lease/nsw/newcastle-region/lambton/residential/unit/8051013>



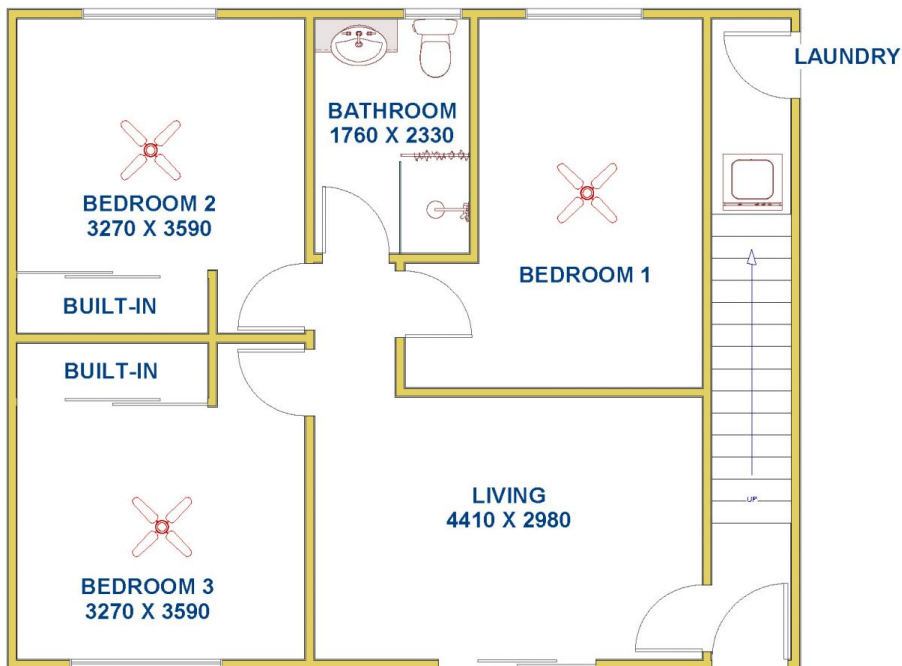
Melissa Reece
02 4950 2025

[For full version visit the website](https://www.reecerealty.com.au)



First Level

INTERNAL AREA TOTAL
APPROX.66M2



Ground Level

INTERNAL AREA TOTAL
APPROX.66M2

ReeceRealty
Newcastle
and Maitland

**323A Newcastle Road,
LAMBTON**

FLOOR DIAGRAM **NOT TO SCALE**
This drawing has been prepared for marketing purposes. Dimensions are a guide only.