



2/359 Pacific Highway Highfields NSW

1 1 1

This one-bedroom flat, located in prime position, has everything you need for quiet, convenient living.

A recently refreshed kitchen, with a provided fridge, dedicated microwave space and a portable stove/oven system. The kitchen opens up to a front deck, with beautiful views.

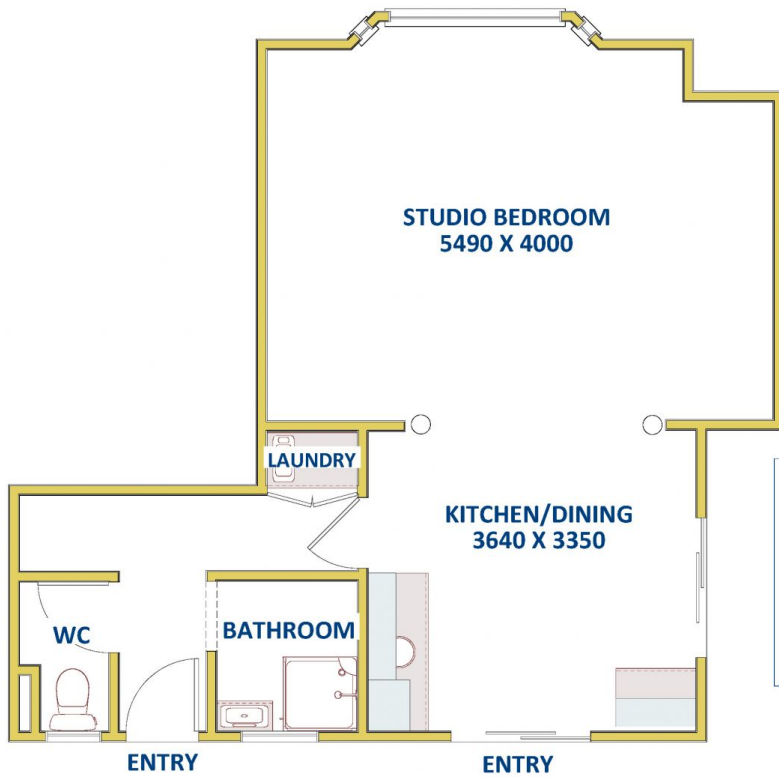
The open-plan kitchen area opens up via a stunning archway, into the spacious bedroom & living studio area fitted with new timber flooring and a large classical window to bring in all that natural sunlight.

A modern recently re-done bathroom with shower and separate toilet is available. A European-style laundry is also available for all your washing needs. Car parking space will be made available in the rear.

View : <https://www.reecerealty.com.au/lease/nsw/newcastle-region/highfields/residential/villa/8044935>



Nick Majurovski
02 4950 2025



FLOOR DIAGRAM
****NOT TO SCALE****
This drawing has been prepared for marketing purposes. Dimensions are a guide only.

TOTAL LIVING AREA
APPROX 47 SQM

**Unit 2/359 Pacific Highway,
HIGHFIELDS**

