






212 McCaffrey Drive Rankin Park NSW

4  1  4 

Location is a bonus with this freshly painted, large family home set within walking distance of Elmore Vale shopping centre & local schools schools with public transport at the door and it is close to John Hunter Hospital.

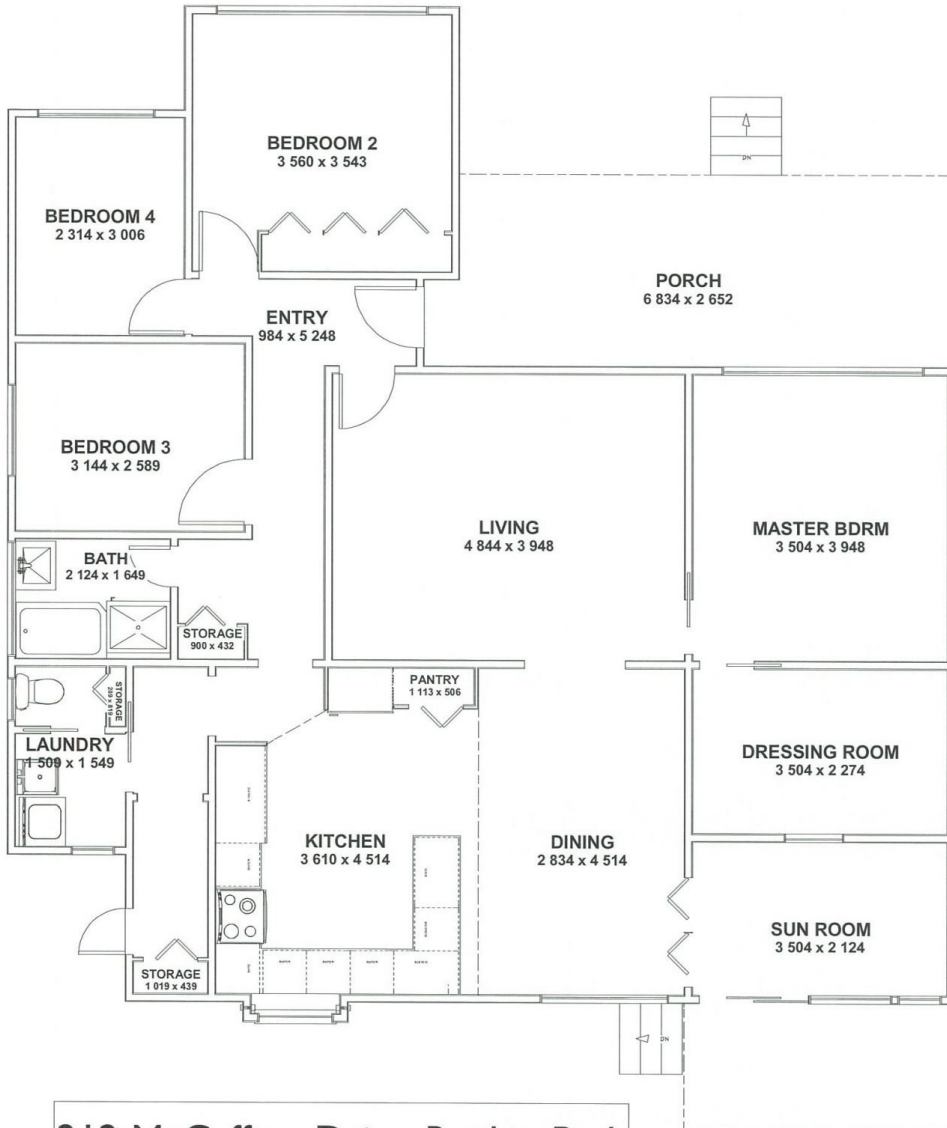
There are four newly carpeted bedrooms with the master featuring split system air conditioning and it also features a large walk in wardrobe with loads of storage space. All bedrooms feature ceiling fans, with one of the other three featuring a built in wardrobe.

The central bathroom features a separate shower and bath. A massive modern kitchen with large peninsula bench, dishwasher and wall oven, pantry space and ceramic cooktop. This area is complimented by beautiful timber floors and adjoins the large family and dining area.

View : <https://www.reecerealty.com.au/lease/nsw/newcastle-region/rankin-park/residential/house/7974121>



Nick Majurovski
02 4950 2025



CURRENT FLOOR PLAN SAMPLE

**** NOT TO SCALE ****
Visual Diagram Only

Disclaimer
 This drawing has been prepared for marketing purposes only. The information and dimensions are a guide only and have been prepared in good faith and with due care. Reece Realty Newcastle, its employees, agents or representatives will not be liable for any loss or damage resulting from any statement, figure, calculation or any other information that any person or organisation relies upon that is contained in this drawing. If any person or organisation requires verification of the contents of the drawing, we recommend that they arrange a registered surveyor to determine the accuracy of walls, columns, areas and set of the plan.

212 McCaffrey Drive, Rankin Park