



153 Lawes Street East Maitland NSW

4 🏠 2 🚗 5 🚗

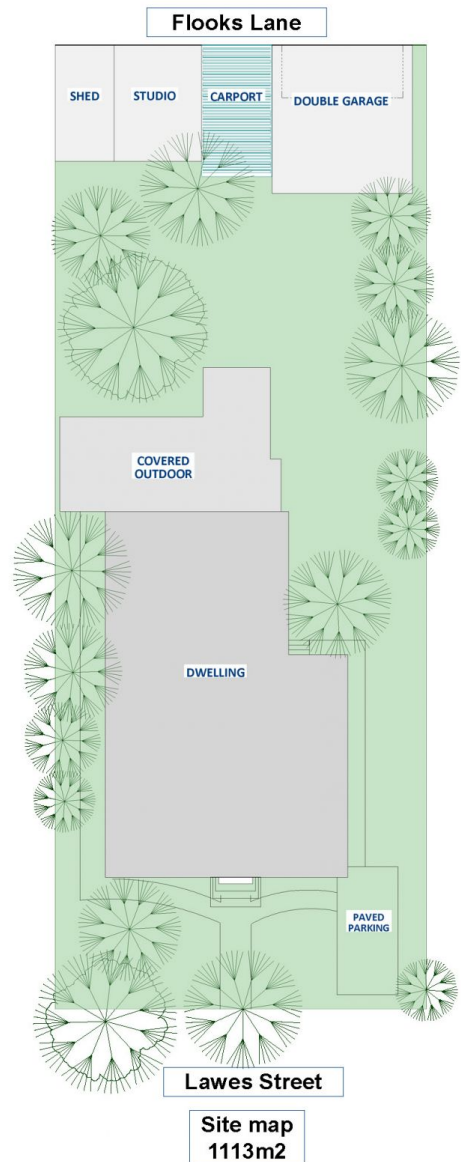
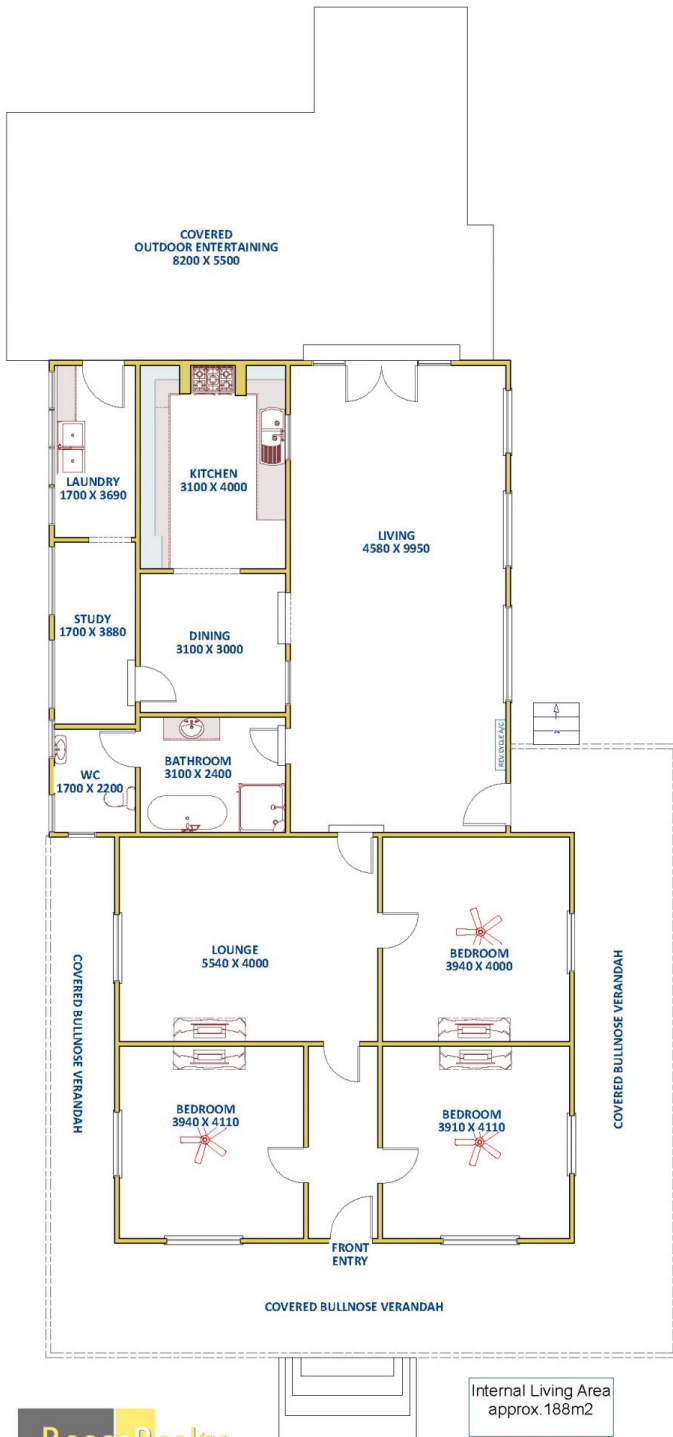
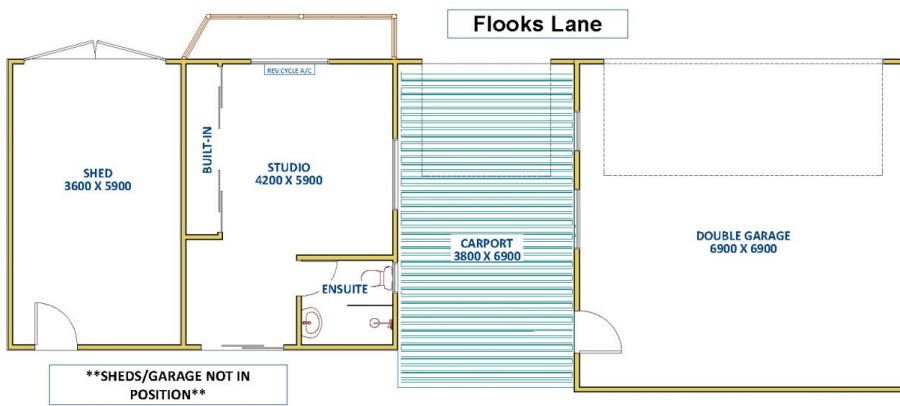
Nestled on a generous 1113 m2 parcel of land in heart of East Maitland is this lovingly preserved, 3 bedroom circa 1890 Victorian residence including separate studio with reverse cycle a/c and ensuite. Original architectural features united with selective modern inclusions create a charming, spacious, and comfortable home. Zoned R1 and with rear lane access to the double garage and carport, there is considerable scope to personalise and capitalise (STCA). Conveniently located an easy walk to shops, transport and cafes, a short drive to major shopping centre and services, hospitals and the boutique offerings of historic Maitland and Morpeth, and approximately 30km from Hunter Valley wineries and Newcastle CBD.

Price : \$1,225,000 to \$1,325,000
Land Size : 1113 sqm
View : <https://www.reecerealty.com.au/sale/nsw/hunter-valley-lower/east-maitland/residential/house/7967139>



Allen Reece
02 4950 2025

Architectural elements honouring 'Lawes House' heritage are evident from the wrap around bullnose verandah, four fireplaces, 12ft ornate ceilings, dado rails, sash windows,



Internal Living Area approx. 188m2

DIAGRAMS
****NOT TO SCALE****
 This drawing has been prepared for marketing purposes. Dimensions are a guide only.