



14 Shereline Avenue Jesmond NSW

5 3 4

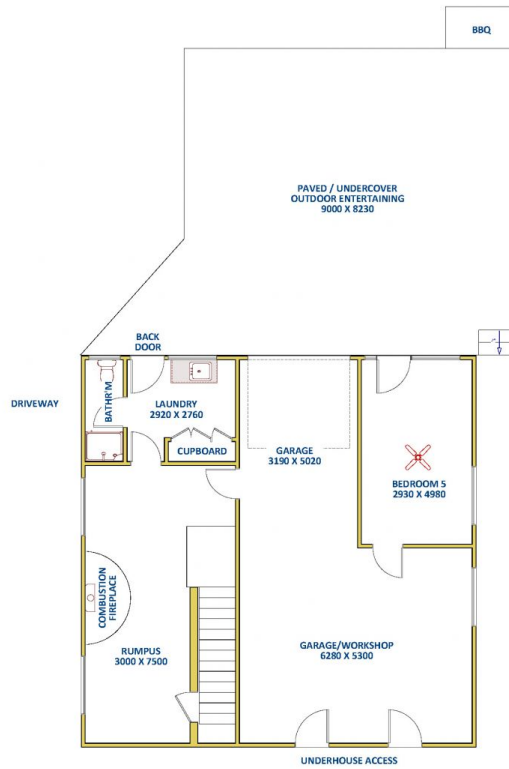
Deceptively spacious, this five bedroom, three bathroom brick and tile home on a fenced 607m² block is centrally located within walking distance to Newcastle University and Jesmond shopping precinct with its many services. Multiple living spaces offer versatility inside. Side drive access to an oversized double garage/workshop beneath the dwelling, plus paved undercover space presents plenty of parking for numerous vehicles.

On ground level you will find timber floorboards throughout. The combined living/dining space includes reverse cycle air conditioning and ceiling fan. Large windows offer light and views out to the front garden. The breakfast bar separates a modern galley style, walk through kitchen from the dining space. Plentiful storage and bench space plus quality appliances, including the 750mm gas cooktop, create a great cooking space. A generous, light filled formal lounge,

Price : \$ 810,000
Land Size : 607 sqm
View : <https://www.reecerealty.com.au/sale/nsw/newcastle-region/jesmond/residential/house/7954348>



Allen Reece
02 4950 2025

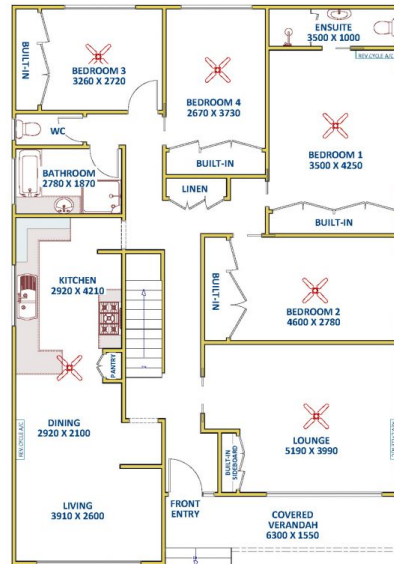


Downstairs
Internal Area
approx.113m2

ReeceRealty
Newcastle
and Maitland

FLOOR DIAGRAM
NOT TO SCALE
This drawing has been
prepared for marketing
purposes. Dimensions are
a guide only.

14 Shereline Avenue, JESMOND



Ground Level
Internal Area
approx.148m2