



## 133 King Street Shortland NSW

4 1 4

The view from the rear of this property will delight you. Relax on the covered rear verandah that stretches almost the width of the home and overlooks the huge backyard.

The four bedroom weatherboard and tile home sits on a 1347 m2 block and consists of a formal lounge room and dining room off the spacious modern kitchen with plenty of bench space and storage with glass sliding doors to the rear verandah area.

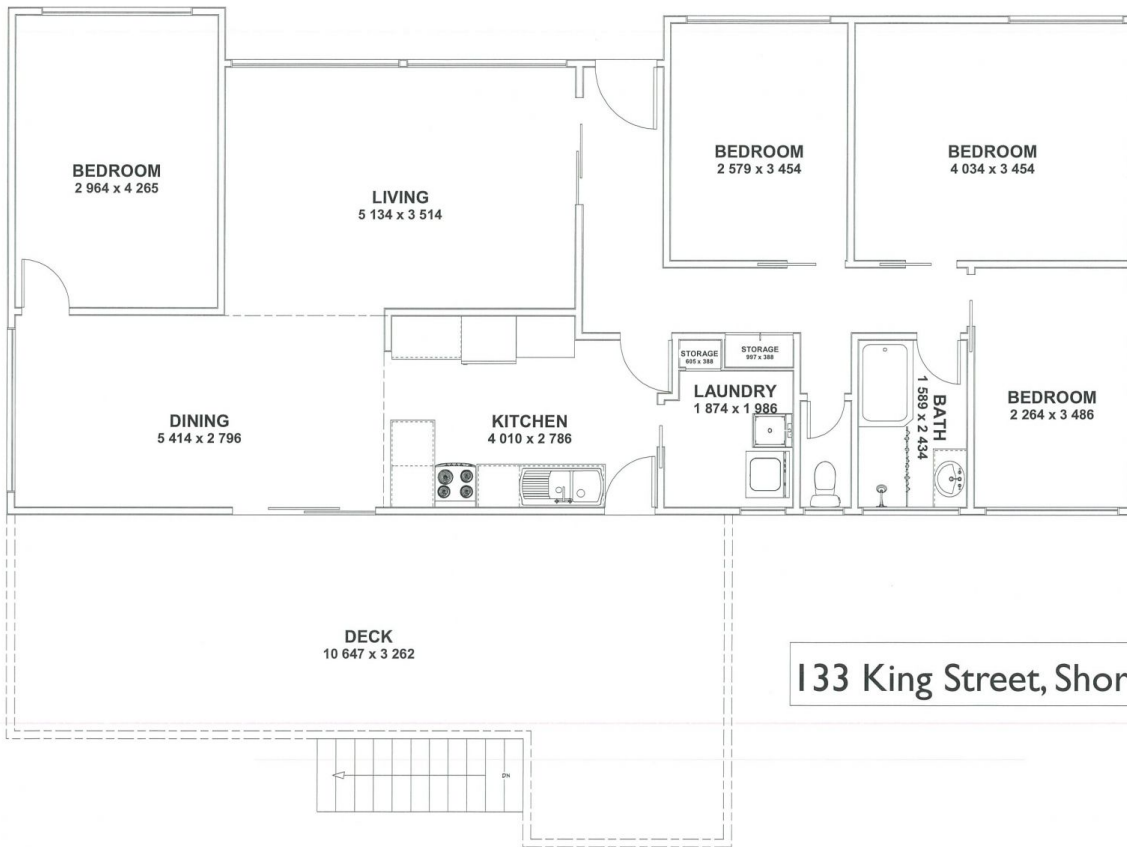
There is access and storage under the house plus a free standing rumpus the size of a double garage, and off street parking for the boat or van.

Added features include gas heating, ceiling fans and polished timber floors.

**Land Size** : 1347 sqm  
**View** : <https://www.reecerealty.com.au/sale/nsw/newcastle-region/shortland/residential/house/7951846>



**Allen Reece**  
 02 4950 2025



**CURRENT FLOOR  
PLAN SAMPLE**

**\*\* NOT TO SCALE\*\***  
*Visual Diagram Only*

**Disclaimer**

This drawing has been prepared for marketing purposes only. The information and dimensions are a guide only and have been prepared in good faith and with due care. Reece Realty Newcastle, its employees, agents or representatives will not be liable for any loss or damage resulting from any statement, figure, calculation or any other information that any person or organisation relies upon that is contained in this drawing. If any person or organisation requires verification of the contents of the drawing, we recommend that they arrange a registered surveyor to determine the accuracy of walls, columns, areas and set of the plan.

**133 King Street, Shortland**