

21/14-18 Croudace Road Elmore Vale NSW

2  1  2 

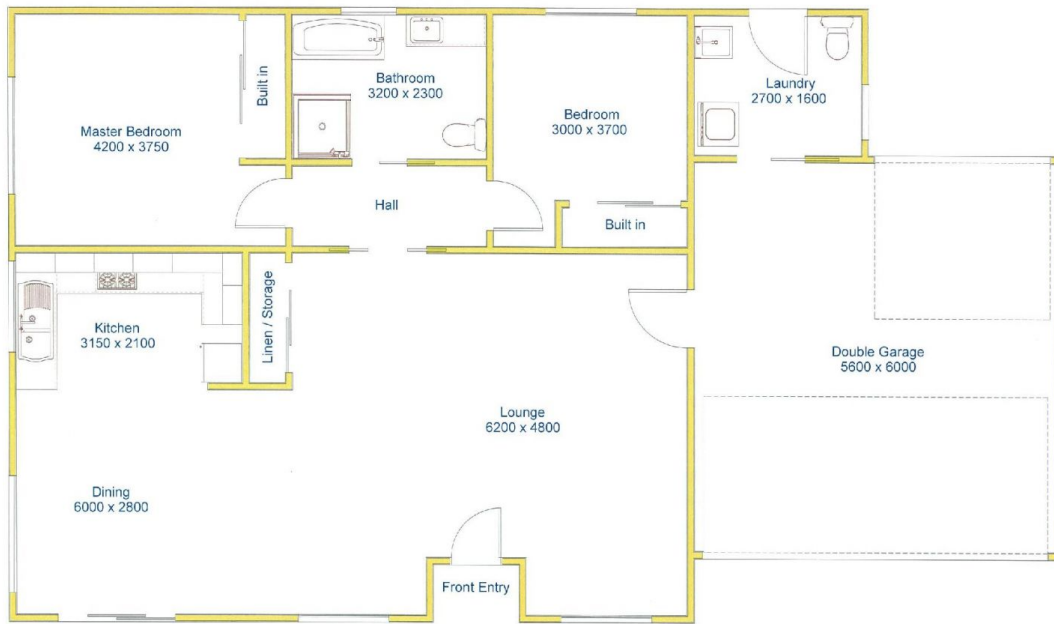
Modern fully fenced brick and tile duplex. Private, light filled with leafy outlook. Featuring open plan family/living/dining area. Internal laundry with a second W.C. Double garage with internal access. Close to schools, shopping, transport and John Hunter Hospital. Currently leased to quality tenants.

Price : \$ 417,000

View : <https://www.reecerealty.com.au/sale/nsw/newcastle-region/elmore-vale/residential/townhouse/7915394>



Allen Reece
02 4950 2025



ACTUAL FLOOR PLAN SAMPLE
****NOT TO SCALE****
Visual Diagram Only

This drawing has been prepared for marketing purposes only. The information and dimensions are a guide only and have been prepared in good faith and with due care. Reece Realty Newcastle, its employees, agents or representatives will not be liable for any loss or damage resulting from any statement, figure, calculation or any other information that any person or organisation relies upon that is contained in this drawing. If any person or organisation requires verification of the contents of the drawing, we recommend that they arrange a registered surveyor to determine the accuracy of walls, columns, areas and set of the plan.

21 / 14-18 CROUDACE ROAD
ELERMORE VALE