



## 74 Verulam Road North Lambton NSW

4  2  2 

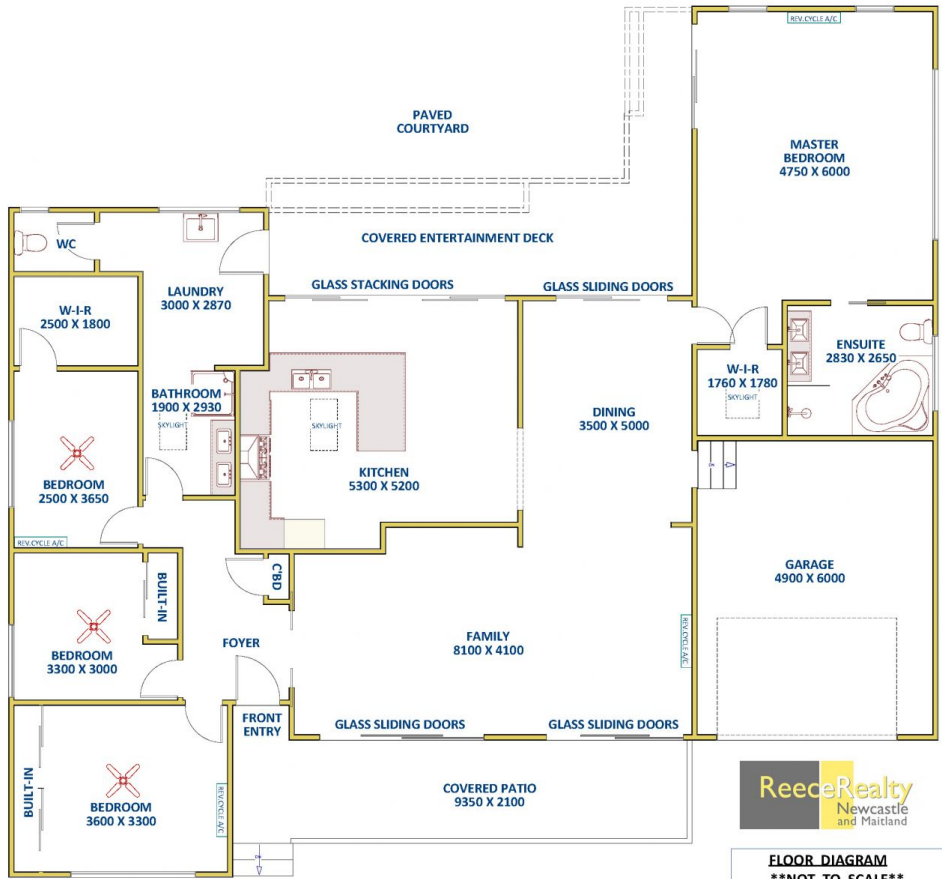
A modern, unassuming exterior belies the spacious, extended and fully renovated interior on this four bedroom double brick home on 632m<sup>2</sup>. Reverse cycle air conditioning throughout, multiple glass sliding doors bringing the outside in, skylights allowing extra natural light, all enhancing family living. New colorbond roofing, external rendering, outdoor paving and solar array mean minimal maintenance and outgoings.

The entry foyer from your wide covered porch leads to three generous bedrooms, all with ceiling fans and either built-in cupboard or walk-in-robe. Two bedrooms also include reverse cycle air conditioning. These bedrooms are serviced by a separate wc and large bathroom/laundry with pristine, high gloss tiling, fresh paint, double vanity and quality inclusions creating a clean and fresh space.

**Land Size** : 632 sqm  
**View** : <https://www.reecerealty.com.au/sale/nsw/newcastle-region/north-lambton/residential/home/7898491>



**Allen Reece**  
02 4950 2025



Internal Living Area  
approx. 223m<sup>2</sup>

**74 Verulam Road,  
NORTH LAMPTON**



**FLOOR DIAGRAM**  
**\*\*NOT TO SCALE\*\***  
 This drawing has been prepared for marketing purposes. Dimensions are a guide only.