



## 10 Harvard Street Jesmond NSW

6 2

This 6 bedroom student house, offering 4 double bedrooms, and 2 king single bedrooms all with desks and wardrobes. The largest room also includes air conditioning.

**Price** : \$225.00 per week  
**View** : <https://www.reecerealty.com.au/lease/nsw/newcastle-region/jesmond/residential/house/7835046>

Located walking distance to Newcastle University, Jesmond Shopping Center and Public Transport Hub. Close proximity to The Mater and John Hunter Hospital and easy commute to Newcastle CBD.



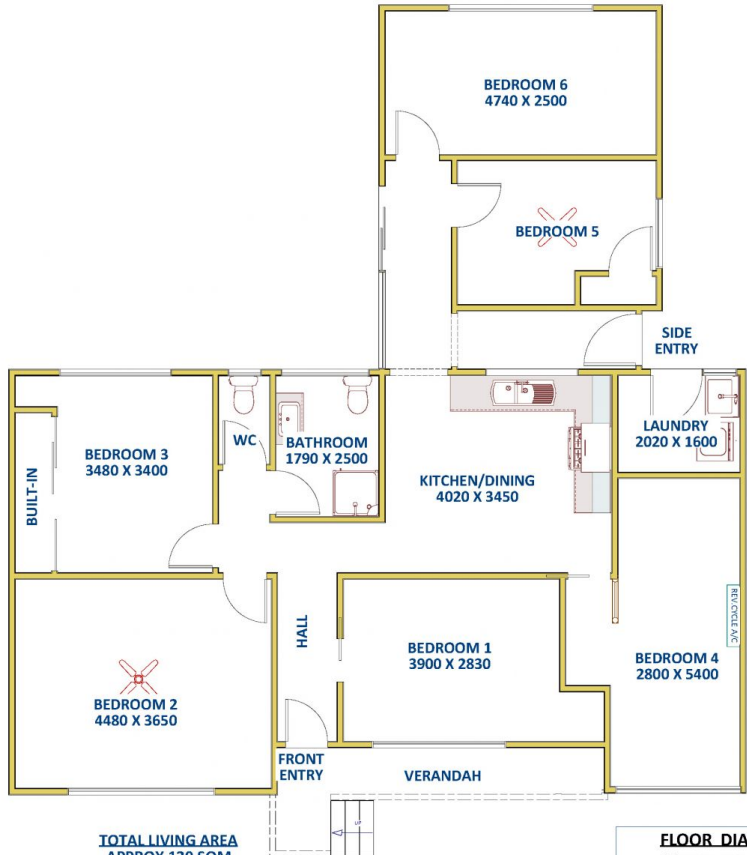
**Melissa Reece**  
02 4950 2025

Please contact our office to arrange an appointment  
\*\*\*\*On-street parking available\*\*\*\*

\*\*\*Sorry no pets\*\*\*

\*\*Note - the room's rent includes electricity and water usage\*\*

Internet is provided at the property as a complimentary



TOTAL LIVING AREA  
APPROX 120 SQM

**ReeceRealty**  
Newcastle  
and Maitland

**10 Harvard Close, JESMOND**

**FLOOR DIAGRAM**  
**\*\*NOT TO SCALE\*\***  
This drawing has been prepared for marketing purposes. Dimensions are a guide only.