



36 Wolstenholme Street Rutherford NSW

3 1 2

This well-maintained family home has three bedrooms, one bathroom and a double carport.

Features include:

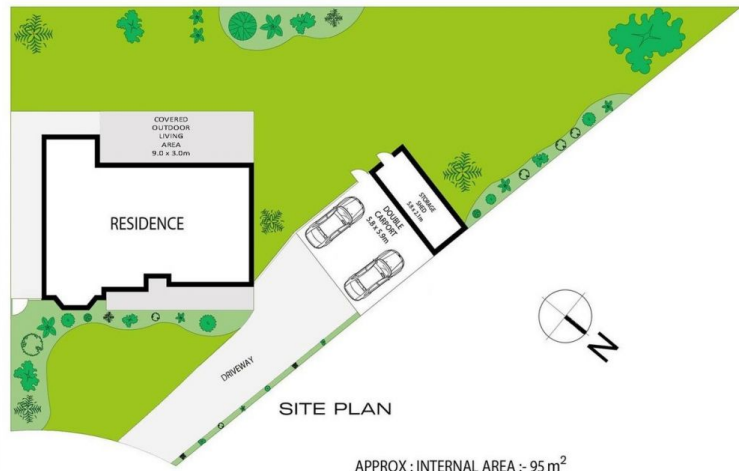
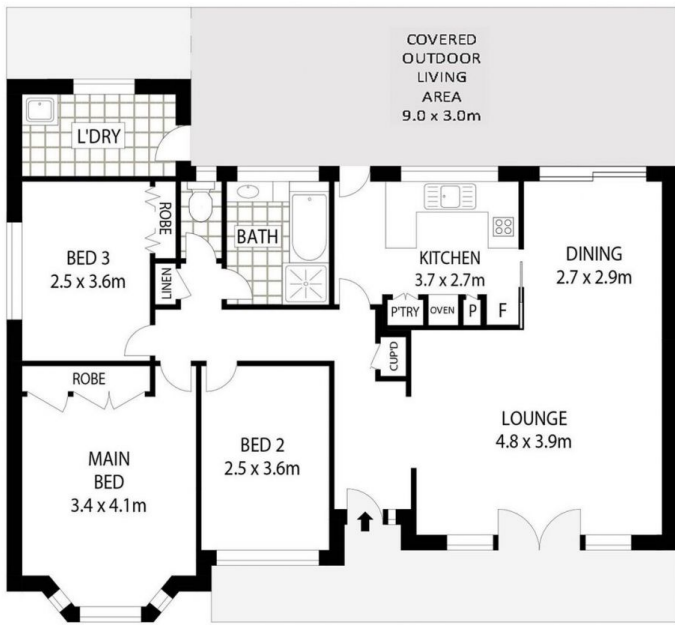
- Open plan lounge and dining room with air-conditioning
- Tidy kitchen with ample cupboard space
- Updated bathroom with separate bath and shower, plus a separate toilet
- Good sized bedrooms, two with built-in robes
- Double carport and storage room
- Large covered entertaining area
- Good sized maintainable yard

In a perfect location, quiet, family-friendly cul-de-sac, minutes to Rutherford Shopping Centre and in walking distance to schools and public transport.

View : <https://www.reecerealty.com.au/lease/nsw/hunter-valley-lower/rutherford/residential/house/7729700>



Melissa Reece
02 4950 2025



SITE PLAN

APPROX : INTERNAL AREA :- 95 m²
 APPROX : EXTERNAL AREA :- 652 m²