



645 Glebe Road Adamstown NSW

2  2  1 

If you commute regularly to down to Sydney, this is the ideal property situated meters from Adamstown train station.

This huge 2 bedroom brick home is perfect for busy people with unique style, featuring a massive master bedroom and large second room, central bathroom and separate toilet and an additional bathroom off the garage. The large "retro" kitchen offers an immense amount of bench space and under bench storage, the walk in pantry is a home chef's dream. The living areas are separated by vintage glass privacy doors.

This house is all about personality and location, walking distance to Adamstown main street and a short distance to

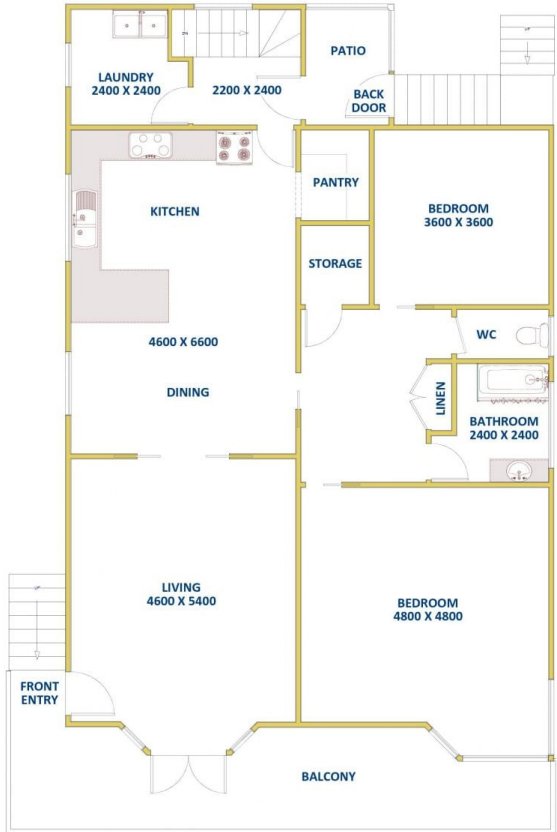
**Type** : House

**View** : <https://www.reecerealty.com.au/lease/nsw/newcastle-region/adamstown/residential/house/7687546>



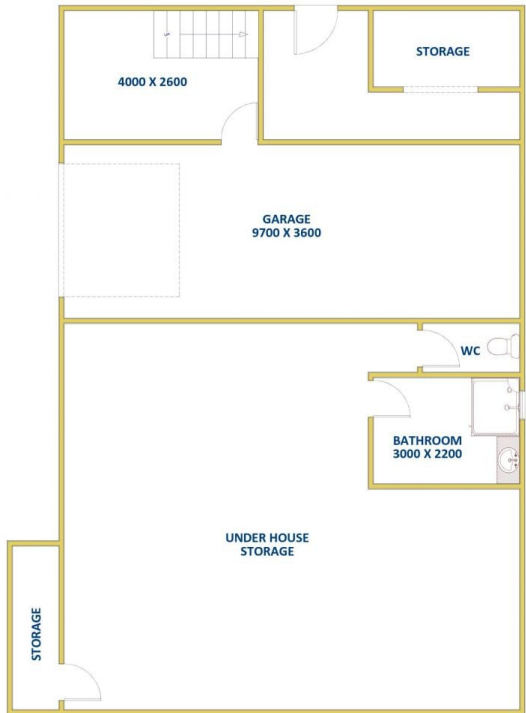
**Melissa Reece**  
02 4950 2025

[For full version visit the website](https://www.reecerealty.com.au)



**GROUND LEVEL**

TOTAL LIVING AREA  
APPROX. 146 SQ.M



**BASEMENT LEVEL**

TOTAL LIVING AREA  
APPROX. 145 SQ.M

INCL GARAGE



**645 Glebe Road, ADAMSTOWN**

FLOOR DIAGRAM  
\*\*NOT TO SCALE\*\*  
This drawing has been prepared for marketing purposes. Dimensions are a guide only.