



24 Wilkinson Avenue Birmingham Gardens NSW

8 3 2

New to the market is this well-presented investment home with six bedrooms in the house plus two separate bedrooms in the self-contained granny flat. With eight bedrooms in total and a rent return of over \$1,300 per week this a very attractive addition to any investment portfolio.

Positioned within five minutes walk to Newcastle University, Jesmond Shopping Centre plus there is public transport at the door.

All bedrooms are a good size and have ceiling fans. In the main house you will find two full-size bathrooms and kitchen facilities are central to the home, adding convenience for students.

Type : House
Land Size : 550 sqm
View : <https://www.reecerealty.com.au/sale/nsw/newcastle-region/birmingham-gardens/residential/house/7422973>

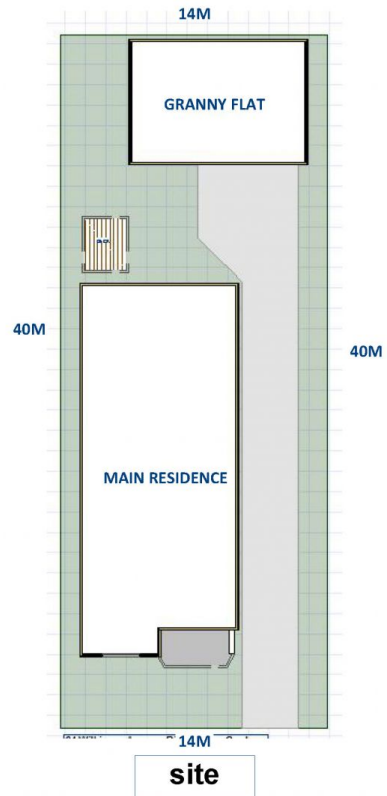
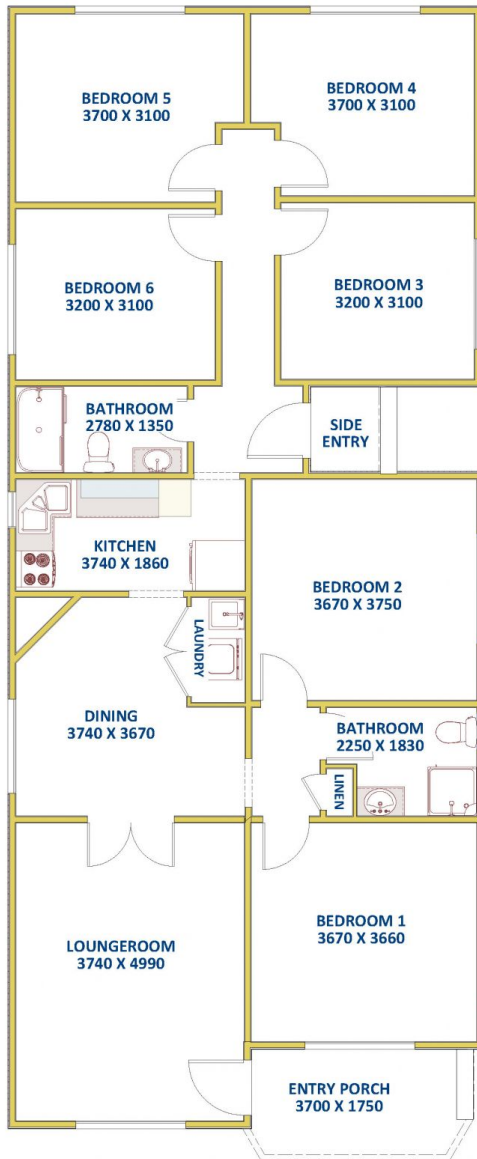


Allen Reece
02 4950 2025

[For full version visit the website](https://www.reecerealty.com.au)



TOTAL LIVING
APPRX 59 SQ M



24 Wilkinson Avenue, Birmingham Gardens

DISCLAIMER: Measurements are approximate for illustration purposes and are to be used only as a guide